

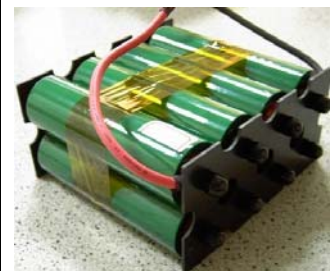
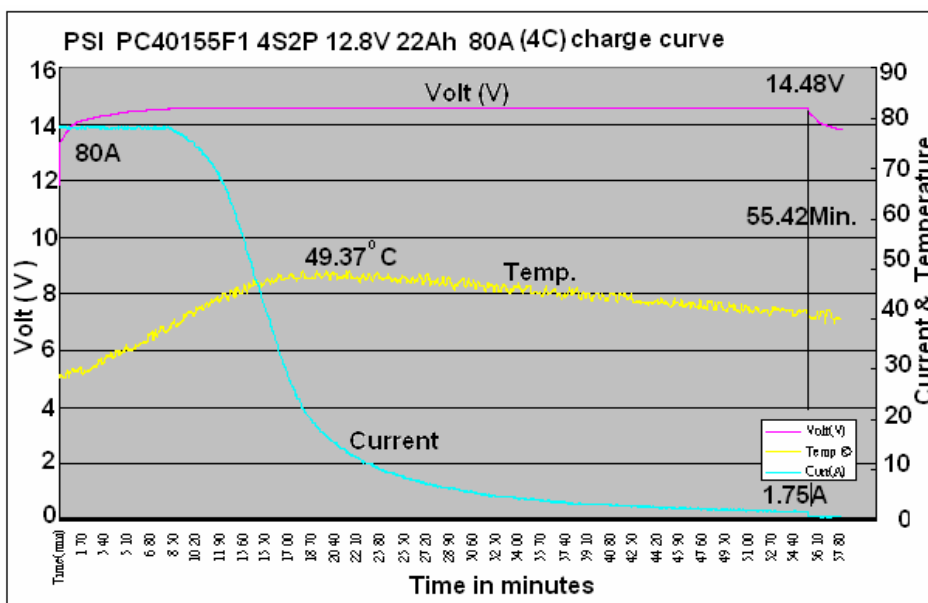
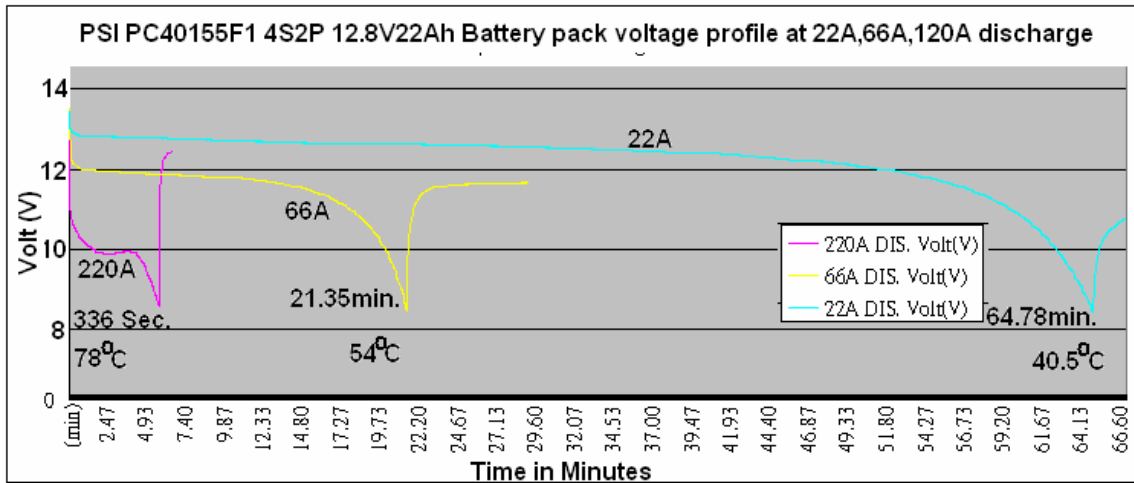


Phoenix Silicon International Corporation

Lithium Iron Phosphate Battery pack performance test data

Application : EV,Solar system, Automobile starting, 12V Lead acid replacement

Performance Tests :



After 80A(4C) charging, discharged at 10A, Capacity : 23.58 Ah

Phoenix Silicon International Corporation

<http://www.psi.com.tw>

Headquarters : 6F, No.6,Li-Hsin Road, Science Park , Hsinchu 300 Taiwan R.O.C.

Energy Business Division. Taipei Sales : Tel: +886-2-29493968 Fax:+886-2-29415415

Mobile : +886-932394418

Email : raymondking@psi.com.tw